



# National Journal of Pharmaceutical Sciences

E-ISSN: 2788-9270

P-ISSN: 2788-9262

[www.pharmajournal.net](http://www.pharmajournal.net)

NJPS 2023; 3(1): 32-37

Received: 19-11-2022

Accepted: 21-12-2022

## Anuwanshi Sharma

Galgotias University, School of  
Basic and Applied Sciences,  
Greater Noida, Uttar Pradesh,  
India

## Mayank Pandey

Amity University, Department  
of CS Noida, Uttar Pradesh,  
India

## Biological effects of narcotics drugs

### Anuwanshi Sharma and Mayank Pandey

#### Abstract

**Background:** New Molecular docking software is a technical approach that is mostly employed in drug discovery and design, as well as for numerous analysis processes. Computerized platforms are used in the process of molecular docking. It is a molecular combination in which one molecule binds to other molecules to form a bonded complex with all-around lowest energy requirements.

Cannabidiol [CBD] has blowup in fame around the world in just a few years. Cannabidiol is currently vended and used to give a wide range of therapeutic illnesses and lifestyle diseases after being revealed as an effective self-medication for Dravet syndrome in progenies. Cannabidiol, a non-psychoactive isomer of the more well-known tetrahydrocannabinol [THC], is becoming increasingly widely accessible in a variability of forms.

**Result:** Using several molecular docking techniques, the current study seeks to investigate the binding interactions of delta-9 THC with cytochrome p450. CYPs are a family of mono oxygenases that contain heme as a cofactor.

The findings of docking tests revealed that these compounds have high binding affinities. The mechanism and interactions are the focus of this research.

**Conclusion:** It aids computer-based concepts, which provide new ideas to staff in investigating and bringing theories together experimentally, as well as bringing answers to all difficulties, including cost, that arise.

**Keywords:** Cytochrome p450, delta-9 THC, molecular docking, binding interactions

#### Introduction

**Background:** A flowering plant genus belonging to the Cannabaceae family is Cannabis. It is unknown how many species there are in the genus. The three types that can be distinguished are Cannabis sativa, Cannabis indica, and Cannabis ruderalis. Cannabis ruderalis could be considered a subspecies of Cannabis sativa, and all three could be considered one species <sup>[1]</sup>. The genus is commonly acknowledged as being native to and initiating in Central Asia, with other studies also claiming that it originated in upper South Asia <sup>[2]</sup>.

Plants have been used as medicine for over 8000 years, according to a large body of literature. The first documented text on the medicinal use of Cannabis was discovered in China. Between 1200 and 800 B.C., the Atharvaveda, Hinduism's sacred literature, cites the psychoactive qualities of cannabis and its use for therapeutic purposes in India <sup>[3]</sup>.

Delta-9 tetrahydrocannabinol (THC), a cannabinoid found in both male and female plants, is the major active principle. THC is found in the highest quantity in the bracts, flowers, and leaves, whereas it is almost non-existent in the stem, root, and seeds.

The amount of THC in a plant varies a lot, and it is probably influenced more by the seed type than by soil or climatic conditions. Cannabidiol, cannabinol, cannabidiolic acid, cannabicyclol, and cannabigerol are among the cannabinoids found in Cannabis sativa, in addition to THC. More than 60 cannabinoids have been identified thus far.

Cannabis is an antidepressant. Antidepressant medicines do not always cause depression. They slow down the central nervous system, movement, and the transmission of signals from the brain to the body relative to other factors. When substantial quantities of cannabis are taken by any individual, it can cause hallucinatory effects.

Cannabis, commonly referred to as marijuana, is a psychoactive material derivative from the cannabis plant that is used for therapeutic purposes. Cannabis can be used in a various activities, involving smoking, vaporizing, ingesting it in food, and extracting it. Cannabis is primarily used for recreational or healing purposes, while it can also be utilized for spiritual motives.

THC is absorbed into the bloodstream through the lungs or stomach and intestines walls.

#### Corresponding Author:

Anuwanshi Sharma

Galgotias University, School of  
Basic and Applied Sciences,  
Greater Noida, Uttar Pradesh,  
India

THC travels through the bloodstream to the brain, where it produces high effects. Inhaled drugs reach the bloodstream faster than those consumed. This means that when cannabis is smoked, the effects are felt faster than when it is ingested. Cannabis has both psychological and physical impacts. THC and its primary metabolite, THC-COOH, can be identified using chromatographic techniques in blood, urine, hair, oral fluid, or sweat as quantity of a drug-testing package or a forensic inquiry into traffic or another illegal crime. The concentrations acquired from such examines can frequently be useful in determining active versus passive revelation, as well as the amount of time since usage and the intensity or length of use.

### Receptor

Receptors are proteins that recognize a molecule or a group of chemicals [ligands] with enough specificity to trigger a signaling cascade that connects to secondary messenger systems.

There are many different types of receptors, they are split in two different groups: intracellular receptors present inside the cell and cell surface receptors present on the plasma membrane.

Receptors are proteins that play an important role in the body's communication system. The vast majority of these are found within the cell membrane [4]. Receptor proteins are implanted in the cell membrane in such a way that their active site-containing tiny component protrudes from the membrane's surface and opens onto the cell membrane's outside region.

The body contains a huge number of distinct receptors that interact with various chemical messengers. Because their binding sites are different in shape, structure, and amino acid makeup, these receptors demonstrate selectivity for one chemical messenger over the other. Antagonists are drugs that attach to the receptor site and prevent it from performing its normal action [5]. When message blocking is required, these are useful. Other medications, known as agonists, replicate the natural messenger by turning on the receptor. They are useful when a natural chemical messenger is not available [6].

When any ligand attaches to the appropriate location on the receptor, it generally operates via amplification, integration, or relaying of signals [7]. Although a cell contains hundreds of identified receptors, they tend to identify and bind to only one type of ligand, resulting in activation or inhibitory processes.

The cytochrome p450 receptor is the subject of this research.

### Cytochrome P450

Cytochrome p450 is a mono oxygenase enzyme family that contains heme as a cofactor [8]. Steroids, fatty acids, and xenobiotic are oxidized by these proteins in mammals, and they are vital for the clearance of different substances, as well as hormone creation and cessation [9]. These proteins are required in the manufacture of defense chemicals, fatty acids, and hormones in plants. A heme-iron center is found in the active site of cytochrome p450.

The name cytochrome p450 enzymes come from the fact that they are attached to cell membranes and contain heme pigment, among other things [10].

These proteins emit a spectrum with a wavelength of around 450nm when attached to carbon monoxide.

Human Cytochromes are mainly membrane-associated proteins found in mitochondrial inner membranes of the endoplasmic reticulum of cells. Many medicines can either raise or reduce the activity of CYP isozymes by affecting their production or directly blocking their function [11].

### Ligand

An ion or small molecule known as a ligand attaches to a metal atom in the center to form a complex. Ligands can take many various forms and interact with receptors on or in target cells, are created by signaling cells. When ligand binds to the receptor, it can trigger certain signals, which helps to initiate or inhibit the biological processes [12]. It is observed that the binding of the ligand and receptors is generally due to the weak forces such as hydrogen bonds, van der waal forces and ionic bonds [13]. Ligand can be classified into the different types according to the biological processes they regulate such as substrate, inhibitors, activators and neurotransmitters [14].

Present study deals with the cannabinoids as ligand, which includes delta-9 THC. Cannabinoid are a huge group of active compounds found in plant Cannabis.

### Δ-9-THC

THC, also known as Dronabinol is the key component responsible for the pharmacological and psychotropic effect caused by Cannabis species. It is one of at least 113 cannabinoids recognized in cannabis. THC is the psychoactive constituent of cannabis. THC shows its rapid absorption from lungs to blood, when smoked. Being lipophilic in nature, it is distributed rapidly throughout the tissues and later to fatty layers [15]. THC interact with various neuromodulators and neurotransmitters. It may sometimes induce or suppress pain, convulsions or tremors depending upon the condition [17].

### Molecular Docking

Docking is a structure-based technique for determining the optimum fit between two molecules [18]. Docking is a system in molecular modeling that calculates the preferred orientation of one molecule to another when they are linked together to make a stable compound. The strength of binding affinity between two molecules can be foretold using information about the preferred orientation [19].

The primary situation for performing a docking screen is the structure of the protein. The structure is usually resolved using a biophysical technique like x-ray crystallography or Nuclear Magnetic Resonance Spectroscopy, although it can also come through homology modeling [20].

A docking device uses this protein structure and a databank of possible ligands as inputs. A docking program's success is determined by two factors: the search algorithm and the scoring mechanism.

The goal of molecular docking is to effectively forecast the monovalent interaction of macromolecules and a small molecule [ligand] starting from their unbound structures, structures obtained from MD simulations or homology modeling, etc. [21]. Predicting bound conformations and binding affinity is the goal.

The operation of these tools is divided into four stages. The first involves determining the structure using various techniques such as NMR [22]. The production of the receptor and ligand files is the second phase, and the computational

procedure employing various algorithms is the third. The analysis of the results obtained by docking is the final phase. Molecular docking is a technique for analyzing the three-dimensional information of structures [receptors and ligands] and predicting various binding modes and places. Structural molecular biology and computer-assisted drug design, it is a crucial tools. The goal of docking is to anticipate the most typical ways that a ligand will attach to a protein with a known three-dimensional structural structure<sup>[22]</sup>. Docking can be used in lead optimization to do virtual screening on huge libraries of complexes, analyses the results, and offer structural suggestions for how the ligands inhibit the target.

It can be challenging to sometimes take the outcomes of stochastic search processes into account because the input configurations for docking are just as important as the docking itself. Competent high-dimensional space exploration and an exact docking candidate rating system are used by effective docking algorithms.

### Literature review on molecular docking technique

**Kolb *et al.*** employed used molecular docking to screen a library of about a million readily available lead-like structures for commercial use. Computer-aided drug design and discovery (CADD) has grown in popularity during the past few years. CADD is used by many large pharmaceutical companies for lead discovery. The process is challenging, and it is challenging to manage the interactions that take place, hence enhancing molecular docking modelling has been important in many situations for several operations.

Damm - Ganamet *et al.* published a structured activity resource document for the community in the year 2013. Even though many Docking programs have been organized over the last two decades, it is still challenging to grasp Docking programs for specific targets.

Emil Fischer had a good year (1894). The well-known "lock and key system," which serves as a model for explaining, was the first discovery of explanation. Crosland introduced the "Induce fit" technique in 1958. The enzyme-substrate interaction, according to this idea, causes conformational alterations that optimize ligand-target interactions. The landscape for energy, which provides the work for the protein confirmations that a ligand attaches to them preferentially, was described in the year 1965, and one evaluation was established in the year 2011.

### Methods

#### Aim and Objective

The basic goal of docking is to determine the ideal manner for a ligand to connect to an active site to obtain optimal conformational for both the receptor and the ligand.

- To accomplish protein-ligand orientation with the least amount of energy expended.
- Its primary function is to identify the correct binding site for the protein.

### Computational tools used for the study

#### Autodock Vina [version 1.5.6]

Auto dock vina was developed at molecular graphics lab [The Scripps Research Institute] by Dr. Oleg Trott. This software is an open source and is extensively used for molecular docking. Auto dock vina is known for reduced running time due to use of multiple CPU of the system and is easier for user to operate. This software uses scoring functions which help in predicting the non-covalent interactions and binding affinities between the receptor and

the ligand. It produces all the possible poses a molecule attains during the docking procedures.

### Discovery Studio Visualizer [DSV]

BIOVIA DS visualizer is a suit of freeware developed by Accelrys. It is used for simulation and molecular modeling of various bio molecules. This program has wide range of application in life sciences, which allows user to analyze and visualize the bio chemical data. It allow user to view three dimensional molecules in different modes<sup>18</sup>. Discovery studio is also used to view results obtained by various docking tools such as auto dock vina.

### Pymol

Warren Lyford Delano designed the computer software, which is a molecular visualization system. It is open source software that s been funded by users and released under the Python License. The first to commercialize it was Delano Scientific LLC, a private software company devoted to offering precious apparatus that are typically accessible to scientific and educational groups. Schrodinger, Inc. is now marketing it. PyMol can generate high-resolution three-dimensional images of tiny compounds as well as biological macromolecules like proteins. PyMol was used to produce around 25% of all published images of three-dimensional protein structures in the scientific literature by 2009. It is one of the few open-source model visualization apparatuses for structural biology that are easily accessible.

### Structural investigations

Present study was carried out using the different computational tools. For this study data of the receptor and ligand is made available on protein data bank [PDB]. Most of the tools used for read and recognize the files in PDB or PDBQT format. In case of unavailability of PDB files, programs like Open Babel can be used to convert any file into the PDB format.

### Collection of Data Bank

The necessary PDB files for carrying out computational studies can be made available at RCSB protein data bank, a worldwide database for the structural data of bio molecules. This is an online database and allows users to download the files in PDB format.

### Docking process steps

The vital phases which are used in a docking procedure are as follows;

A directory has to be created for saving all the files and initially contains the receptor file, ligand file and configuration file in PDBQT format. Once the run is complete the log file and output files are also saved in the same.

### Creation of Target [Protein]

1. Open Auto Dock Tools
2. File | Read Molecule | Open
3. Edit | Hydrogen | Add | Polar Only | Remove Water Molecules [if required]
4. Grid | Macromolecule | Choose | Select Molecule [save in the same folder in PDBQT format].
5. Setting the grid box size- go to tools again | Grid | Grid Box | Adjust Spacing If Required| Center Grid Box [by changing x, y, z, center] | reduce or increase the box size in x, y, z directions around the active site | Note down all box parameters | close Grid Dialog Box

**Formation of ligand file**

6. Ligand | Input | Open
7. Display | show/hide molecule | Receptor; on/off
8. Ligand | Torsion free | Choose Torsion | Done
9. Ligand | Output | Save as PDBQT

**Making of instruction file**

Generate a file named conf.txt for auto dock vina in notepad.

```
\Program Files(x86)\The Scripps Research Institute\vina\vina.exe --help
```

```
\Program Files(x86)\The Scripps Research Institute\vina\vina.exe --config conf.txt--log
```

Results are obtained as log.txt file and the changes in the structural configuration of the ligand is obtained as out.pdbqt. Output files basically shows the different poses and also the affinity values.

Auto dock vina provides the binding affinities of different poses arranged in the descending order as log.txt file. The changes in the output file of ligand after docking or we can say that the results can be analyzed in the PyMol. It allows to observe the three dimensional molecules in the different modes and save the viewing results according the type of file required.

Molecular docking was carried out between the one receptor and one ligand. The value of exhaustiveness for the calculation was 8 and the grid parameters are the following;

center x-1.00, center y-1.00, center z-1.00

size x- 98, size y-120, size z-104

**Results**

The interaction of ligands with the receptor is influenced by the structural modifications in the ligand and the binding sites of the receptor. Ligands having the certain areas in their structure through which they can interact with the receptor by forming the hydrogen bonds or Van Der Waal interactions.

**Discussions****THC - Cytochrome P450 interactions**

The results obtained as log.txt file and output file shows the nine binding poses for THC-Cytochrome p450 interactions,

$$V_{\text{total}} = \sum_{\text{angles}} V_{\text{bond}} + \sum_{\text{angles}} V_{\text{angle}} + \sum_{\text{dihed}} V_{\text{dihed}} + \sum_{\text{impr.}} V_{\text{impr}} + \sum_{i \neq j} (V_{\text{vdW}} + V_{\text{elec}})$$

Quantum mechanics computations, on the other hand, are time expensive and are commonly utilized to research chemical reaction mechanisms. It is an extremely precise tool for analyzing transitional stages. It is quite expensive,

**Docking calculations**

The receptor and the ligand files are saves in the PDBQT format along with the conf.txt file in the same working directory with the use of command prompt and then the docking calculations are performed.

Open the command prompt and go to the working directory by typing the name of the directory and then start the docking calculations by typing the commands such as;

with best pose having the affinity of -9.2 kcal/mol. lower the binding energy more stable is the complex.

**QM-MM Approach**

Molecular mechanics is a computational technique that uses potential functions derived from classical physics to compute the potential energy surface for a specific arrangement of atoms. The force field potential of molecular mechanics [MM] is used to characterize the ligand and receptor interactions in this method.

An inter-atomic potential fundamental functional form incorporates both bonded and non-bonded terms referring to atoms linked by covalent bonds. Although the specific decomposition of the terms varies on the force field, the total energy can be expressed as;

$$E_{\text{total}} = E_{\text{bonded}} + E_{\text{non-bonded}}$$

Where the constituents of the covalent and non-covalent contributions are given by the following summations;

$$E_{\text{bonded}} = E_{\text{bond}} + E_{\text{angle}} + E_{\text{dihedral}}$$

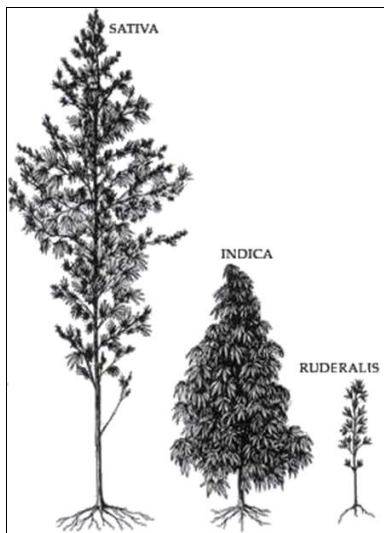
$$E_{\text{non-bonded}} = E_{\text{electrostatic}} + E_{\text{van der Waals}}$$

The molecular mechanics energy equation, which is a sum of elements, is used to determine the energy due to bond stretching, angle bending, torsional angles, hydrogen bonds, Van Der Waals forces, and columbic attraction and repulsion.

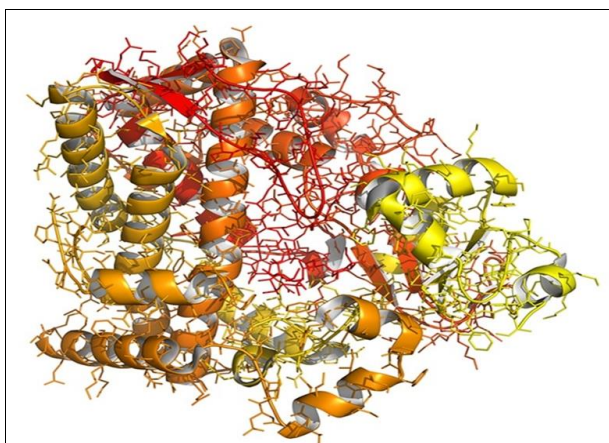
and it is only good for very small systems with high accuracy, like DFT. It can be utilized for larger systems with a lesser level of precision.

**Table 1:** Affinity between receptor and ligand

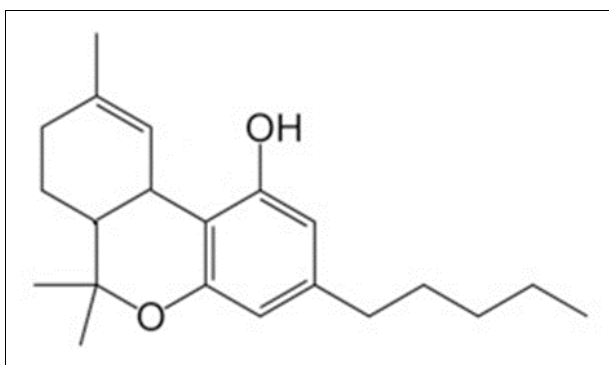
Mode	Affinity[KCAL/MOL]	Dist. From RMSD 1.B.	Bestmode. RMSD U.B.
1	-9.2	0.000	0.000
2	-8.9	2.212	6.180
3	-8.0	2.796	6.670
4	-8.0	3.128	5.747
5	-7.5	5.387	8.373
6	-7.1	8.639	11.879
7	-7.0	20.931	24.045
8	-6.9	10.290	11.049
9	-6.9	8.827	10.577



**Fig 1:** This figure shows the different species of the cannabis



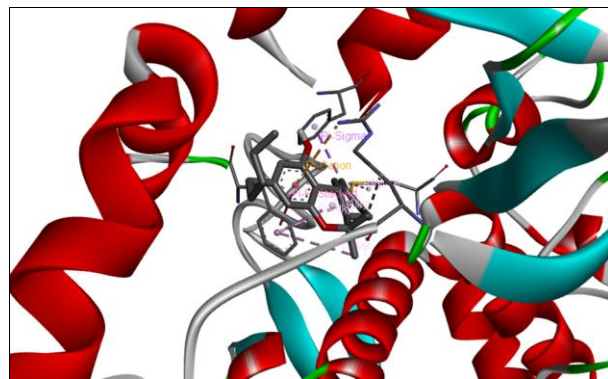
**Fig 2:** Cytochrome p450 [CYP3A4, human], chemical structure. It plays an important role in drug detoxification in the human body



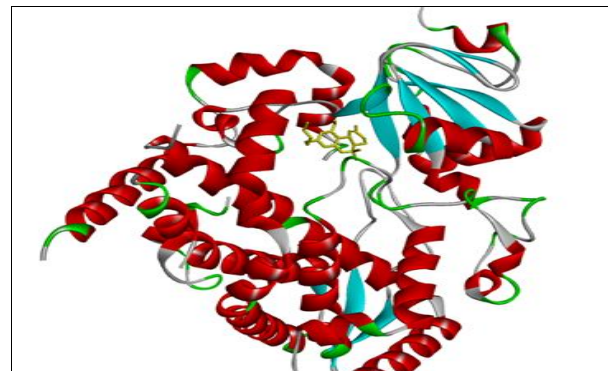
**Fig 3:** Structural details of delta-9 THC



**Fig 4:** It is the ribbon like representation of the Cytochrome p450 in the Discovery Studio Visualizer



**Fig 5:** The THC can be seen inside the binding pocket, enlarged view shows the hydrogen bond



**Fig 6:** The interaction between the THC-cytochrome P450 for best binding pose. THC can be seen inside the receptor

**Conclusions**

When it comes to developments, it is important to found in literature related to computer-assisted drug design, which includes silico approaches with biophysical data, toxicology clinical studies, and other topics that are crucial in drug design and discovery. It aids computer-based concepts, which provide new ideas to staff in investigating and bringing theories together experimentally, as well as bringing answers to all difficulties, including cost, that arise. As a result, many more issues exist, such as the role of water molecules in overcoming constraints, solvent effects, entropic effects, receptor flexibility, and so on. This is a massive task that will lead to massive discoveries and provide information on the use of computerized technologies in drug design.

**List of abbreviations**

THC- Delta-9 tetrahydrocannabinol  
 MD- Molecular docking  
 CYPs - CYTOCHROME P450

**References**

1. Andre CM, Hausman JF, Guerriero G. Cannabis sativa; the plant of the thousand and one molecules. *Frontiers in plant science*. 2016;7:19.
2. Sytsma K, Morawetz J, Pires J, Nepokroeff M, Conti E, Zjhra M, *et al*. Urticalean rosids; Circumscription, rosid ancestry, and phylogenetics based on rbcL, trnL-F, and ndhF sequences. *American Journal of Botany*. 2002;89(9):1531-1546.
3. Behere AP, Behere PB, Sathyanarayana Rao TS. Cannabis; Does it have a medicinal value? *Indian Journal of Psychiatry*. 2017;59(3):262-26.



4. Gonzalez FJ, Gelboin HV. Human cytochromes P450; evolution and cDNA-directed expression. *Environmental Health Perspectives*. 1992 Nov;98:81-5.
5. Slaughter RL, Edwards DJ. Recent advances: The cytochrome P450 enzymes. *A pharmacotherapy*. 1995;29:619-24.
6. Dresser GK, Spence JD, Bailey DG. Pharmacokinetic-pharmacodynamics consequences and clinical relevance of cytochrome P450. *Clin Pharmacokinet*. 2000;38:41-57.
7. Baron R, Setny P, McCammon JA. Water in cavity-ligand recognition. *Journal of the American chemical Society*. 2010;132(34):12091-7.
8. Huestis MA. Pharmacokinetics and metabolism of the plant cannabinoids, delta9-tetrahydrocannabinol, Cannabidiol, and cannabiol. *Handbook of experimental pharmacology*. 2005;168:657-690.
9. Huestis MA, Henning field JE, Cone EJ. Blood cannabinoids. I. Absorption of THC and formation of 11-OH-THC and THCCOOH during and after smoking marijuana. *Journal of Analytical Toxicology*. 1992;16:276-282.
10. Baker D, Pryce G, Giovanni G, Thompson AJ. The therapeutic potential of cannabis. *The Lancet Neurology*. 2003;2:291-8.
11. Jorgensen WL. The many roles of computation in drug discovery. *Science*. 2004;303(5665):1813-1818.
12. Langer T, Hoffmann RD. Virtual screening; an effective tool for lead structure discovery? *Cur Pharm Des*. 2001;7(7):509-527.
13. Kitchen DB, Decornez H, Furr JR, Bajorath J. Docking and scoring in virtual screening for drug discovery; methods and applications. *Nat Rev Drug Discov*. 2004;3(11):935-949.
14. Gohlke H, Klebe G. Approaches to the description and prediction of the binding affinity of small molecule ligands to macromolecular receptors. *Angew Chem Int Ed Engl*. 2002;41(15):2644-2676.
15. Trott O, Olson AJ, Auto dock Vina. Improving the speed and accuracy of docking with a new scoring function, efficient optimization and multithreading. *Journal of computational Chemistry*. 2010;31:455-461.
16. Lengauer T, Rarey M. Computational methods for bio molecular docking. *Current Opinion in structural Biology*. 1996;6(3):402-6.
17. Pagadala NS, Syed K, Tuszynski. Software for molecular docking; a review. *Journal of biophysical reviews*. 2017;9:91.
18. Ban F, Dalal K, Li H, LeBlanc E, Rennie PS, Cherkasov A. *J Chem. Inf. Model*. 2017;57(5):1018-1028.
19. Berman HM, Westbrook J, Feng Z, Gilliland G, Bhat TN, Weissig H, *et al*. The protein data bank nucleic acids research. 2000;28:235-242.
20. Kolb et el, Olsson TSG, Bowden SJ, Hall RJ, Verdonk ML, Liebeschuetz JW, *et al*. Potential and Limitations of Ensemble Docking. *Journal of Chemical Information and Modeling*. 2012;(52):1262-1274.
21. Ferreira LG, dos Santos RN, Oliva G, Andricopulo AD. Molecular docking and structure-based drug design strategies. *Molecules*. 2015;20:13384-1342.
22. Morris GM, Lim Wily. *Molecular docking strategies*. Molecules, 2008, 20.